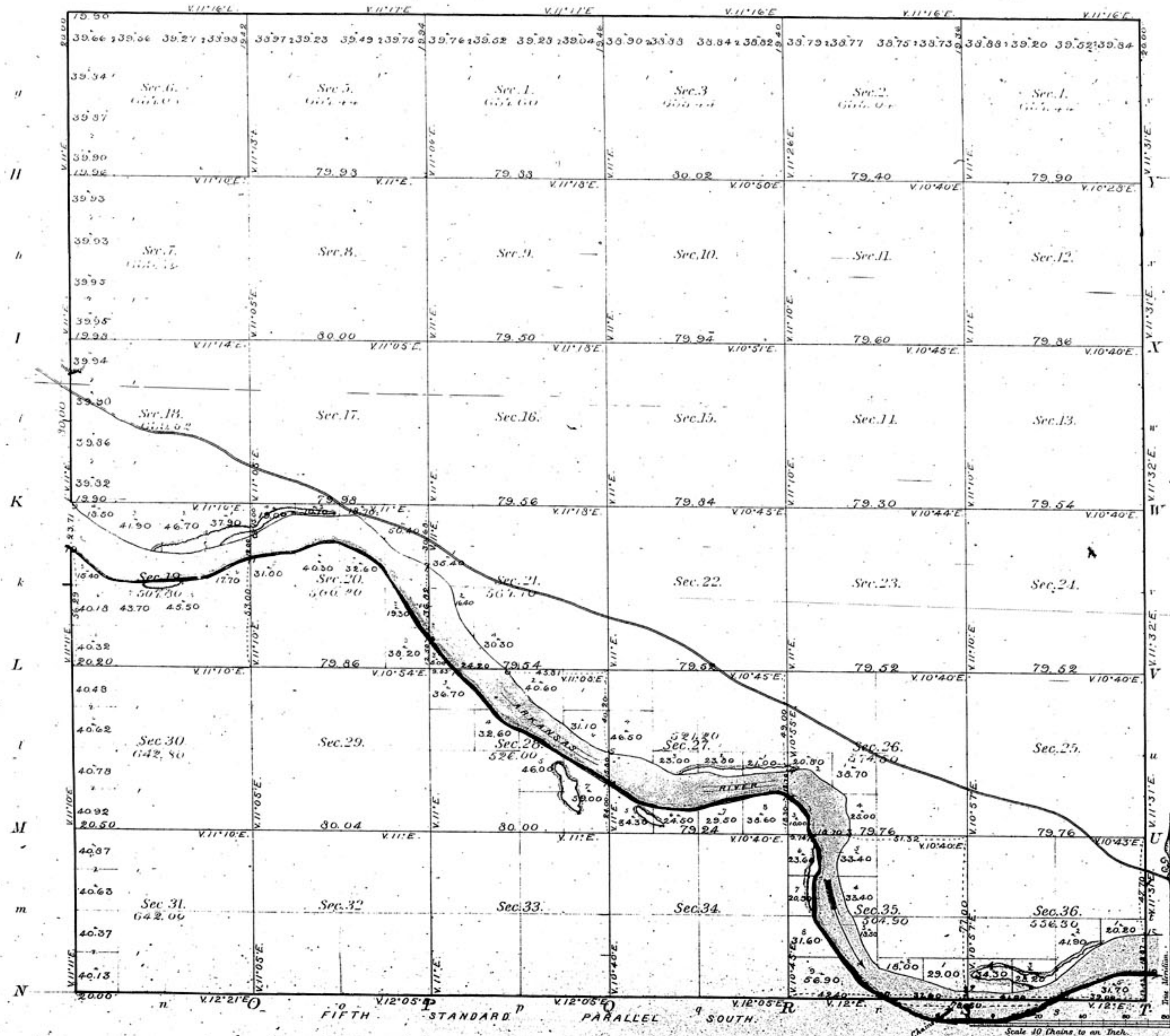


TOWNSHIP N^o 25 SOUTH RANGE N^o 2 WEST OF THE 6th PRINCIPAL MERIDIAN KAN. TER.

G F E D C B A

Meanders of
 Posts Courses, CHAS. Posts Courses, CHAS. Posts Courses, CHAS.



Total number of Acres. 22,162.12

Survey Designated	By Whom Surveyed	Date of Contract	Amount of Survey	When Surveyed	Estimated area of River
Township lines	James Nathan	August 6, 1860	M. C. 1A.	September 1860	862.42
Subdivisions	Stack & Hill	September 21, 1860	59 71 13	Jan. 25 & 28, 1860	
5th Standard Parallel S.	Fredrick Hann	Only 2, 1858		October 1858	
	Meander		14 62 50		
	Total		74 53 63		

The above Map of Township N. 25 South of Range N. 2 West of the 6th Principal Meridian Kansas Territory is strictly conformable to the field notes of the survey thereof on file in this Office, which have been examined and approved.

Surveyor General's Office,
 Topeka, Kan. 1861.

W. A. D. Purcell
 Surveyor General