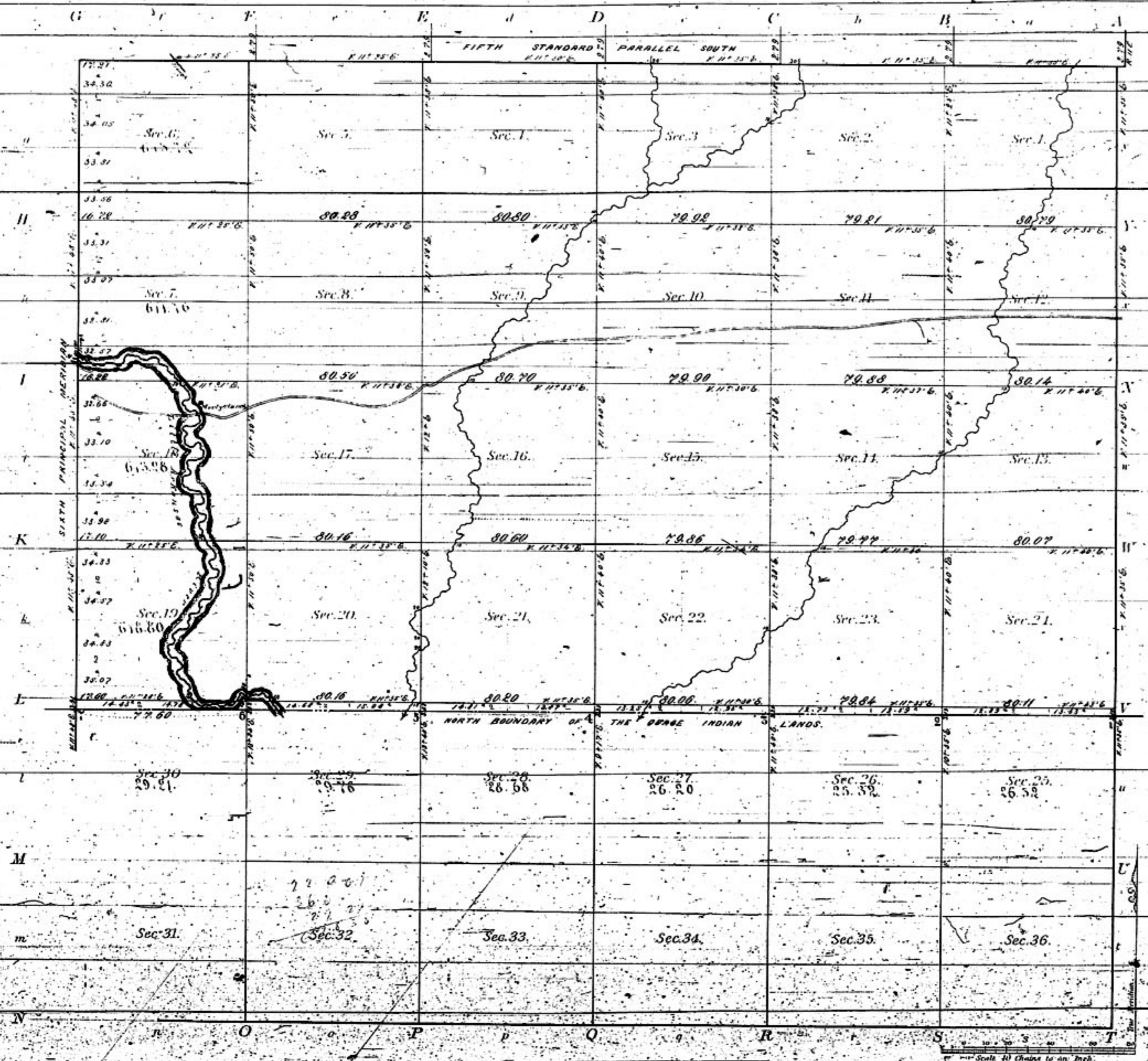


TOWNSHIP N<sup>o</sup> 26 SOUTH RANGE N<sup>o</sup> 1 EAST OF 6<sup>th</sup> PRINCIPAL MERIDIAN KAN. TER.



Meanders of  
 Rivers, Creeks, etc., with Courses, Distances, etc.

Total number of acres 15,425.25

Survey Designated	By Whom Surveyed	Date of Contract	Amount of Survey	When Surveyed
Township lines	James Withers	August 6 <sup>th</sup> 1860	1/4 - 1/4 - 1/4	December 1860
Subdivisions	Stuck & Hill	September 21 <sup>st</sup> 1860	44 21 72	Decr. 21 <sup>st</sup> 23 <sup>rd</sup> 1860
5 <sup>th</sup> Standard Parallel S.	Joseph Leffler	November 27 <sup>th</sup> 1855		September 1856
6 <sup>th</sup> Principal Meridian	James Withers	August 6 <sup>th</sup> 1860		September 1860

The above Map of Township N<sup>o</sup> 26 South of Range N<sup>o</sup> 1 East of the 6<sup>th</sup> Principal Meridian, Kansas Territory is strictly conformable to the field notes of the survey thereof on file in this Office, which have been examined and approved  
 Surveyor General's Office,  
 Topeka, Kan., Dec. 14<sup>th</sup> 1860  
 W. A. B. Baird  
 Sur. Gen.