

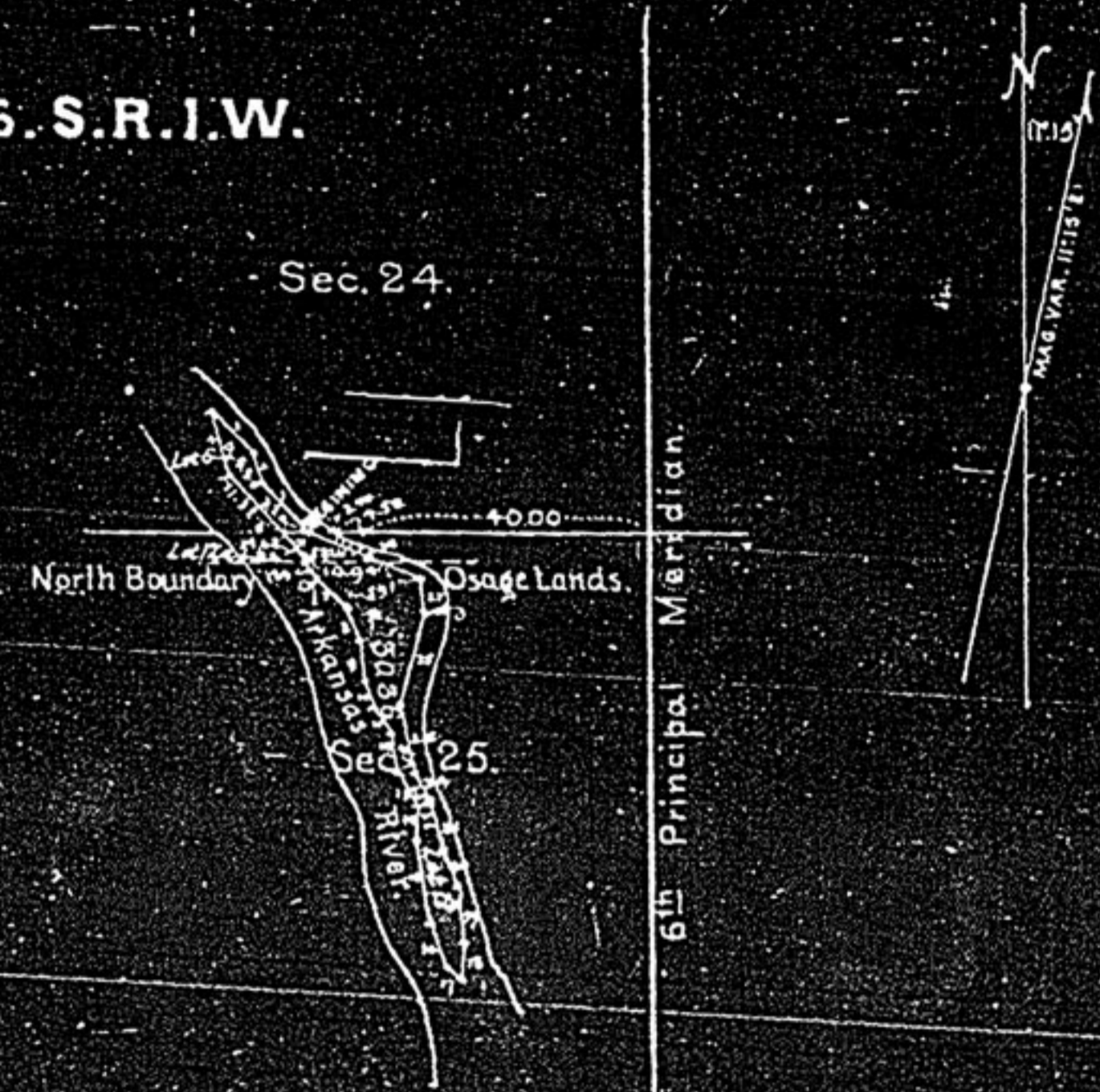
Original

Apr 21-86
G. H. M.

T. 26. S. R. 1. W.

PLAT
OF AN ISLAND IN THE
ARKANSAS RIVER
IN
SECTIONS 24 AND 25
T. 26. S. R. 1. W. 6th P. M.
STATE OF KANSAS.

SCALE 40⁰⁰ = 1 INCH.



MEANDERS of ISLAND.		
NO.	COURSE	DISTANCE.
1	N. 39° 20' W	9 ^{CHS} 23 ^{LKS}
2	N. 15° 40' W	4 . 12
3	N. 41° 13' W	9 . 73
4	S. 14° 50' E	10 . 32
5	S. 41° 20' E	16 . 00
6	S. 28° 05' E	2 . 47
7	S. 40° 18' E	7 . 28
8	S. 23° 54' E	4 . 50
9	S. 5° 34' E	5 . 77
10	S. 18° 46' E	4 . 05
11	S. 30° 28' E	4 . 40
12	S. 12° 23' E	5 . 97
13	S. 29° 15' E	4 . 86
14	S. 00° 15' W	3 . 09
15	S. 9° 05' E	12 . 55
16	S. 18° 20' E	6 . 65
17	S. 42° 27' E	2 . 45
18	N. 5° 38' E	5 . 23
19	N. 5° 00' W	8 . 36
20	N. 21° 05' W	5 . 73
21	N. 15° 35' W	7 . 28
22	S. 71° 27' W	1 . 92
23	N. 65° 09' E	1 . 74
24	N. 19° 21' W	4 . 60
25	N. 9° 15' W	9 . 73
26	N. 16° 00' E	13 . 35
27	N. 5° 00' W	5 . 12
28	N. 66° 20' W	17 . 20

Department of the Interior
General Land Office
April 29, 1886

The above Diagram of an Island in the Arkansas River, in Sections 24 & 25 T. 26 S. R. 1 West of 6th principal Meridian in the State of Kansas, is a correct diagram of survey executed by O. Mulvey, U. S. Deputy Surveyor in pursuance of instructions from the Commissioner of the General Land Office, bearing date of the 3^d day of December 1884 and is strictly conformable to the Field Notes thereof, which have been examined and approved.

Received March 14 1886
E. P. McCabe
Auditor of State,

A. J. Frank
Commissioner
Ex Officio Surveyor General of Kansas

MLC
La.