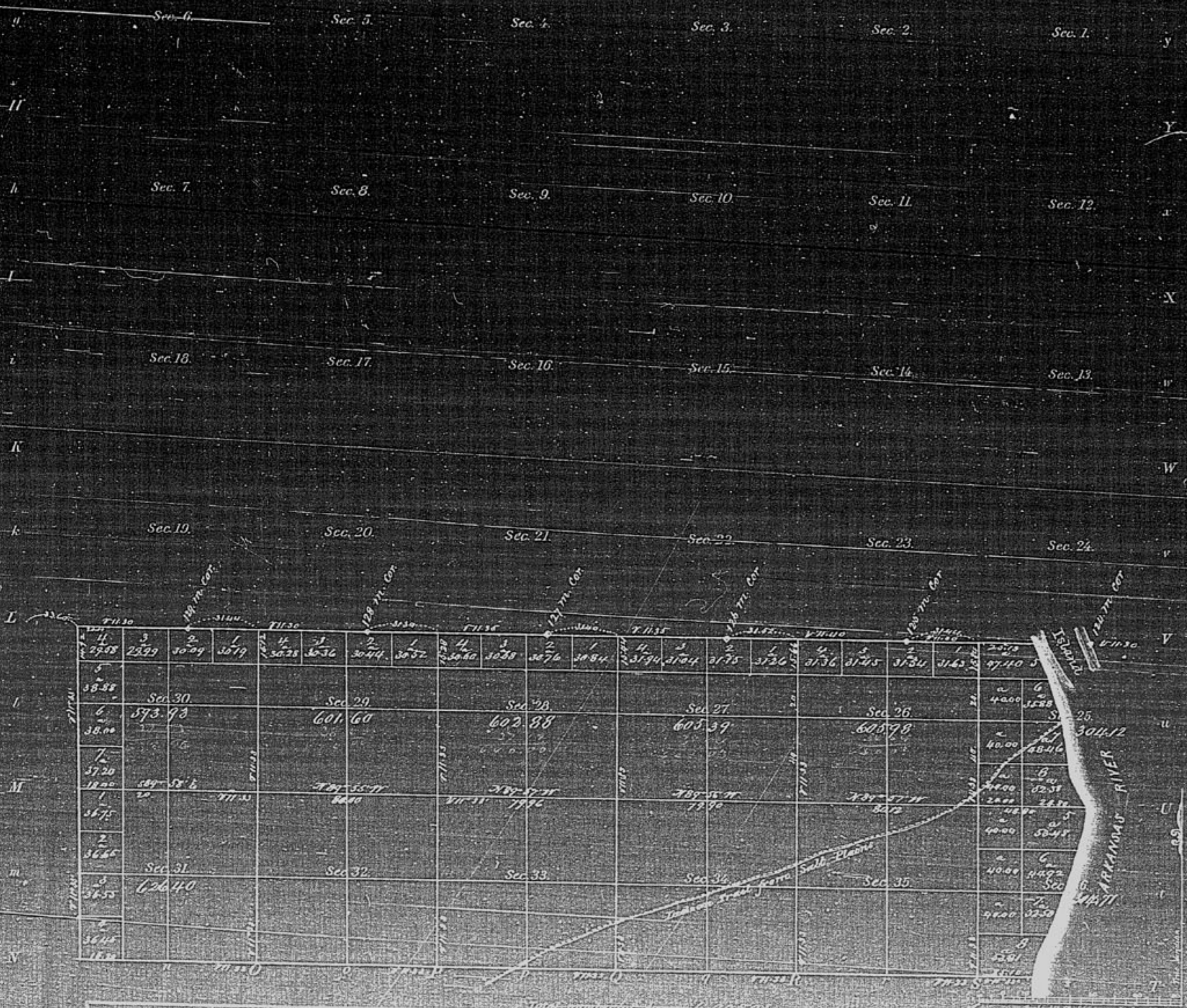


TOWNSHIP N<sup>o</sup> 26 South RANGE N<sup>o</sup> 1 West 6 Principal MERIDIAN Kan.



Meanders of Arkansas River							
Date	Course	Ch. Lk.	Posts	Course	Ch. Lk.	Posts	Course
Down Stream							
	S 38 1/2 E	10.00					
	S 27 1/2 E	5.00					
	S 18 1/2 E	25.00					
	S 11 1/2 E	5.00					
	S 7 E	20.00					
	S 15 1/2 E	15.70					
	S 11 W	20.00					
	S 13 W	28.00					
	S 25 W	5.00					
	S 29 1/2 W	16.00					
	S 13 W	12.00					
	S 3 1/2 W	4.00					
	N 1/2 E	1.20					

Department of the Interior  
 General Land Office  
 September 10 1871  
 I hereby certify that this is a correct copy  
 of the Plat of the Township of No. 26 South  
 Range No. 1 West of the 6th Principal Meridian in  
 the State of Kansas on file in this office  
 W. C. Drummond  
 Commissioner

Section	Acres	Owner
1	58.88	
2	57.20	
3	56.75	
4	56.65	
5	56.55	
6	56.15	
7	56.00	
8	57.93	
9	601.60	
10	602.88	
11	605.39	
12	605.98	
13	601.12	
14	600.00	
15	599.00	
16	598.00	
17	597.00	
18	596.00	
19	595.00	
20	594.00	
21	593.00	
22	592.00	
23	591.00	
24	590.00	
25	589.00	
26	588.00	
27	587.00	
28	586.00	
29	585.00	
30	584.00	
31	583.00	
32	582.00	
33	581.00	
34	580.00	
35	579.00	
36	578.00	

This plat was filed in the office of the  
 Commissioner of the General Land Office  
 at Washington D. C. on the 10th day of  
 September 1871.  
 W. C. Drummond  
 Commissioner