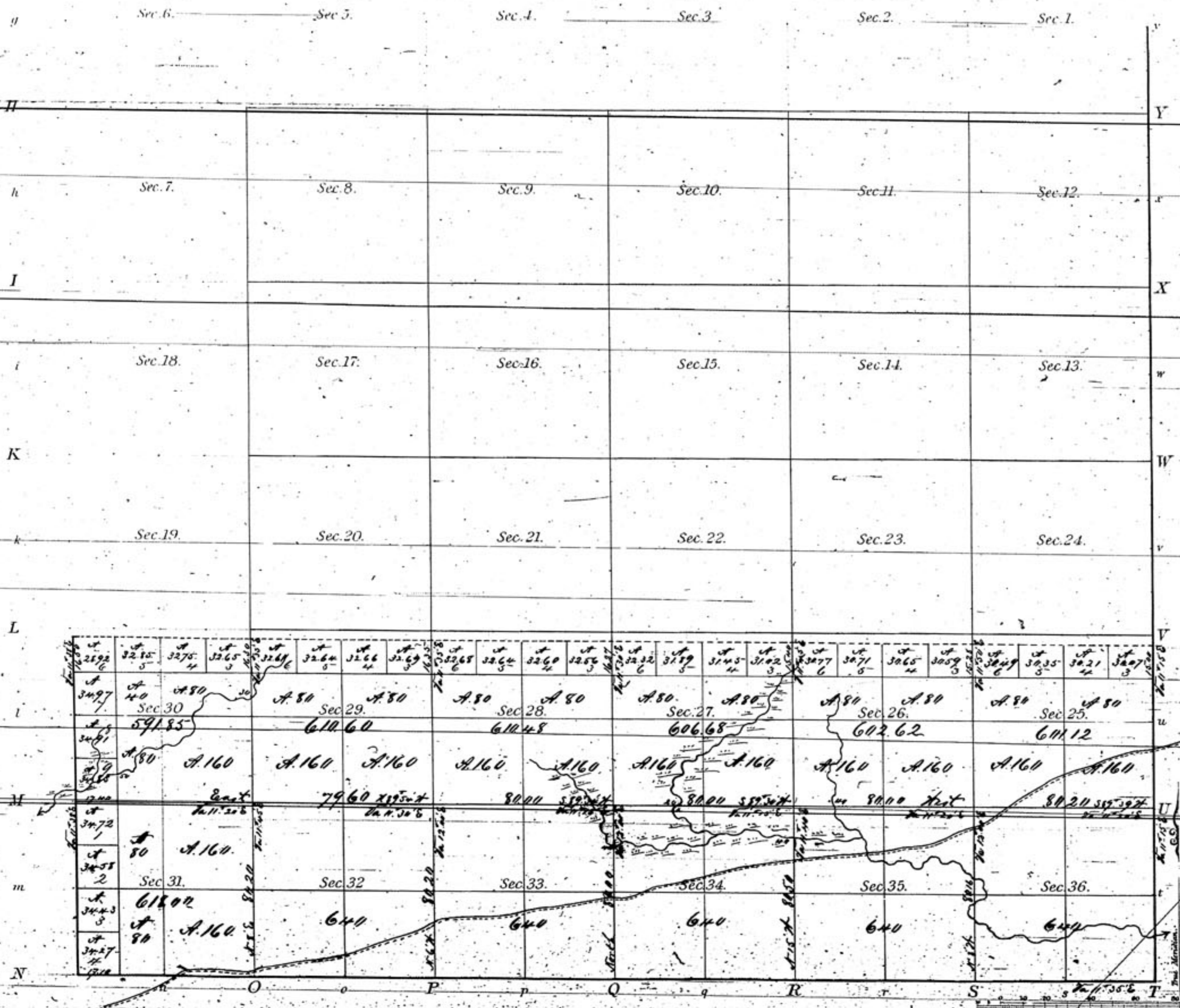


TOWNSHIP N<sup>o</sup>: 26 South RANGE N<sup>o</sup>: 2 East 6<sup>th</sup> Principal MERIDIAN Kansas.

G F E D C B A

Meanders of  
Posts Courses Ch<sup>o</sup> IR<sup>o</sup> Posts Courses Ch<sup>o</sup> IR<sup>o</sup> Posts Courses Ch<sup>o</sup> IR<sup>o</sup>



Dept of the Interior  
Genl Land Off<sup>r</sup>  
April 7<sup>th</sup> 1880  
I hereby certify that this  
is a correct copy of Plot  
of Township no. 26 South  
Range no 2 East 6<sup>th</sup> Principal  
Meridian Kansas on file  
in this Office

*[Signature]*  
Commissioner

Total number of Acres 7441.35

Surveys Designated	By Whom Surveyed	Date of Contract	Amount of Surveys	When Surveyed
Township lines	Coyler & Bonha	Sept 1 <sup>st</sup> 1867	87.62	May 28 <sup>th</sup> 1867
Subdivisions			16.57	July 1 <sup>st</sup>

The above Map of Township No. 26 South of Range No. 2 East 6<sup>th</sup> Principal Meridian State of Kansas is strictly conformable to the field notes of the survey thereof on file in this Office, which have been examined and approved.  
General Land Surveyor General's Office.  
September 21<sup>st</sup> 1867  
*[Signature]*  
Commissioner