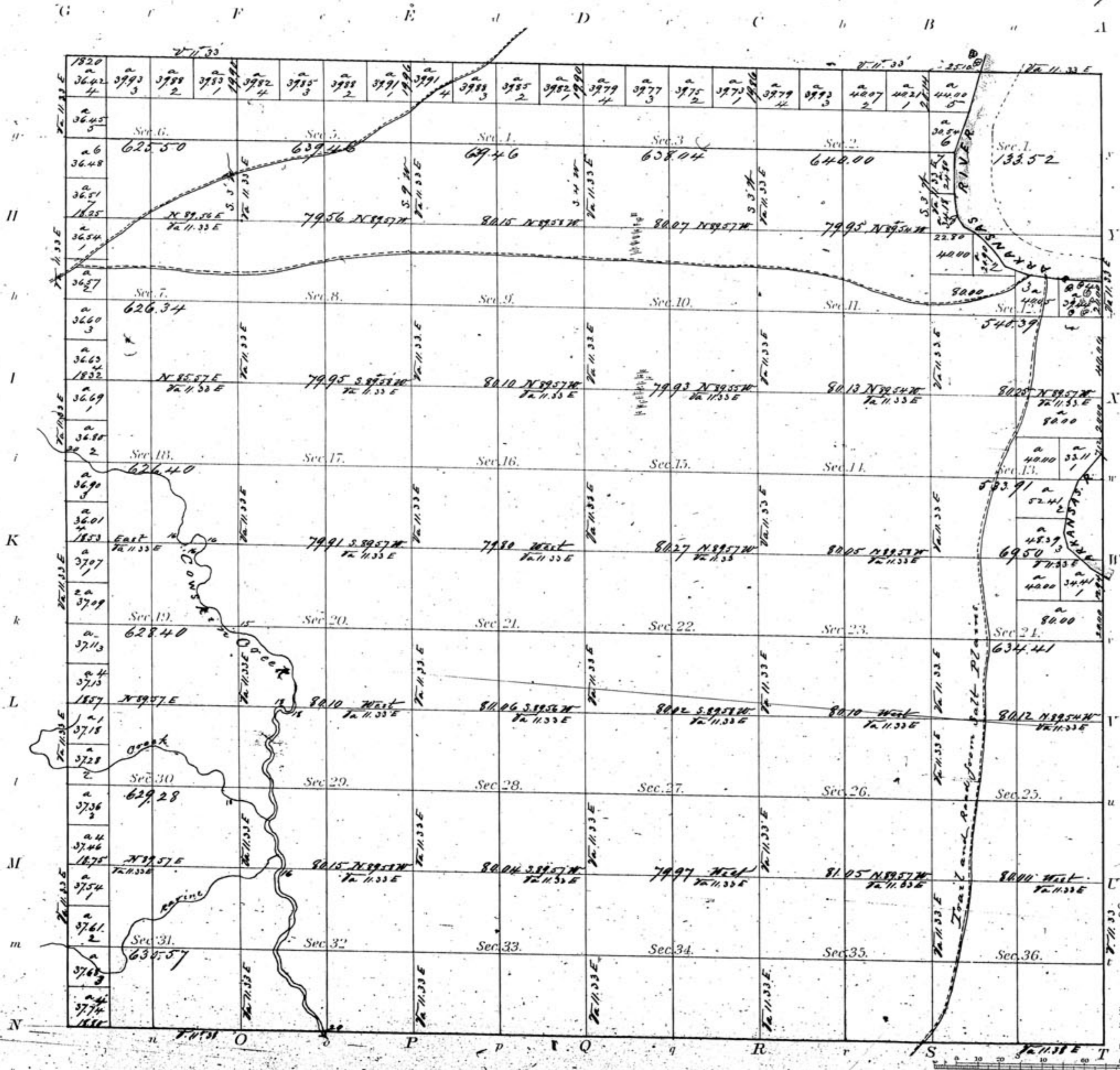


TOWNSHIP N: XXVII South RANGE N: 1 West of the 6th Principal MERIDIAN



Meanders of Arkansas River.

Posts	Courses	Ch'ls	Posts	Courses	Ch'ls
<i>Down Stream</i>					
1	S 17 N	6.00			
	S 19 N	22.00			
	S 4 1/2 N	6.00			
	S 2 N	17.00			
	S 9 1/2 E	10.50			
	S 16 E	5.50			
	S 37 E	5.00			
1	S 63 E	4.10			
	S 41 E	9.00			
	S 33 1/2 E	9.00			
	S 69 E	13.00			
	S 82 E	13.00			
2	N 89 E	21.30			
	S 40 N	8.20			
	S 37 1/2 N	5.00			
	S 2 1/2 N	11.50			
	S 7 1/2 N	18.00			
	S 20 E	6.50			
3	S 34 E	7.00			
	S 42 1/2 E	6.50			
4	S 7 E	6.25			
	M 15	Ch'ls	2	63	85

Department of the Interior
 General Land Office
 September 12, 1872
 I hereby certify that this is a correct copy
 of the plat of Township No. 27 South
 Range No. 1 West of the 6th Principal
 Meridian Kansas on file in this office

Wm. D. Williams
 Commissioner

Total number of acres 22,245.68

Survey Designated	By Whom Surveyed	Date of Contract	Amount of Survey	When Surveyed
Township lines	Land J. Hunt	May 25 th 1867	M. Q. L.	
Subdivisions			61 70.07	Oct 11 th 1867

The above Map of Township No. 27 South of Range No. 1 West of the 6th Principal Meridian State of Kansas is strictly conformable to the field notes of the survey thereof on file in this office, which have been examined and approved.

Wm. D. Williams
 Commissioner
 April 16th 1868