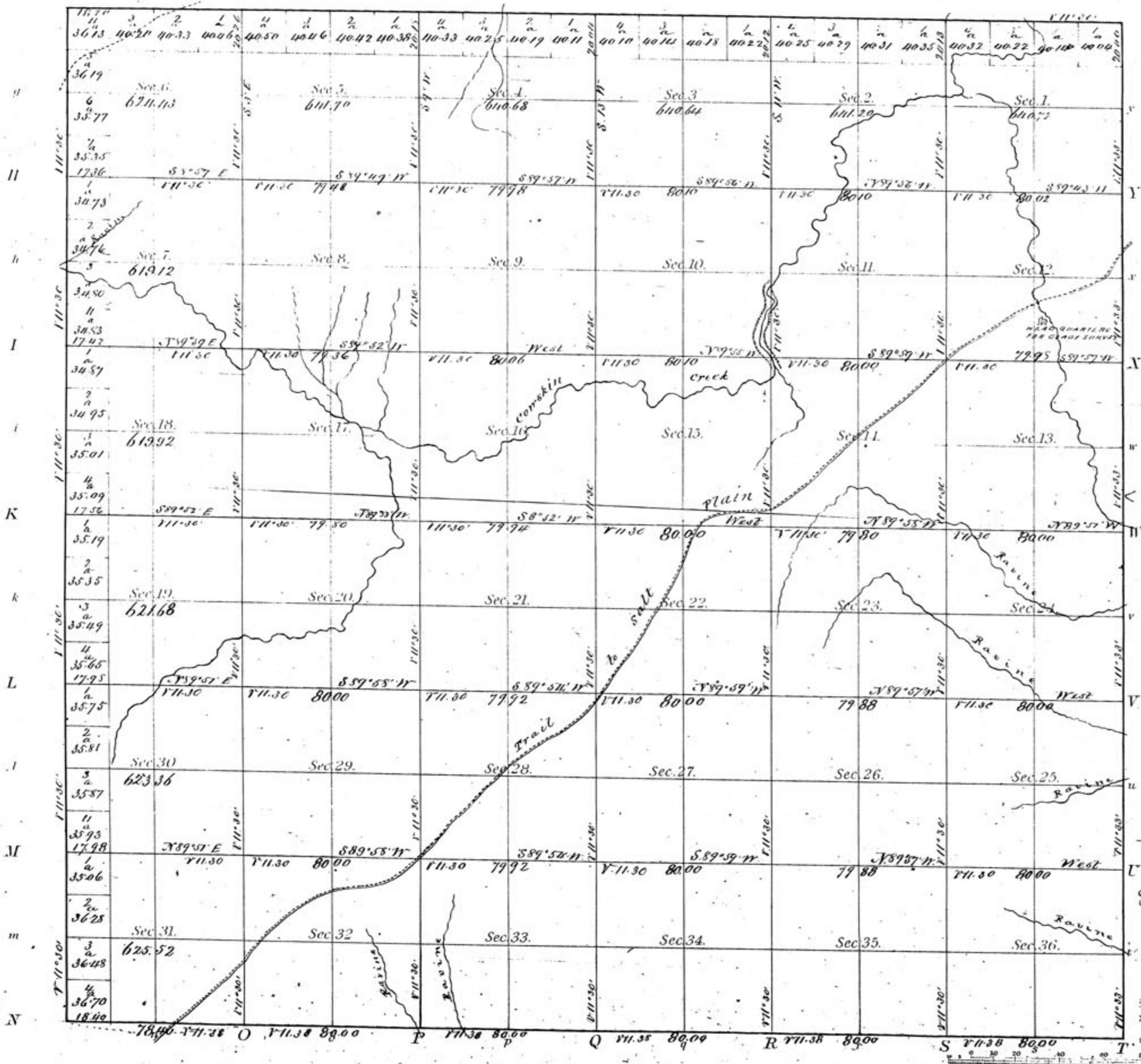


TOWNSHIP N^o 27 South RANGE N^o 2 West of the 6th Principal

MERIDIAN

G F E D C B A



Meanders of
Posts Courses Ch^o IK Posts Courses Ch^o IK Posts Courses Ch^o IK

Department of the Interior
General Land Office
December 1st 1871.
I hereby certify that this is a correct copy
of the Plat of Township N. 27 South Range
N. 2 West of the 6th Principal Meridian
in the State of Kansas on file in this
Office
Walter S. Williamson
Commissioner

Total number of Acres 22,929.65

Surveys Designated	By Whom Surveyed	Date of Contract	Amount of Surveys	When Surveyed
Township lines	Saml. G. Smoot	May 28 th 1867	M. Ch. IX.	
Subdivisions			59.67.31	

The above Map of Township N. 27 South of Range N. 2 West 6th Principal Meridian State of Kansas is strictly conformable to the field notes of the survey thereof on file in this Office, which have been examined and approved.
General Land Office
Surveyor General's Office
April 16th 1868
Jos. S. Wilson
Commissioner