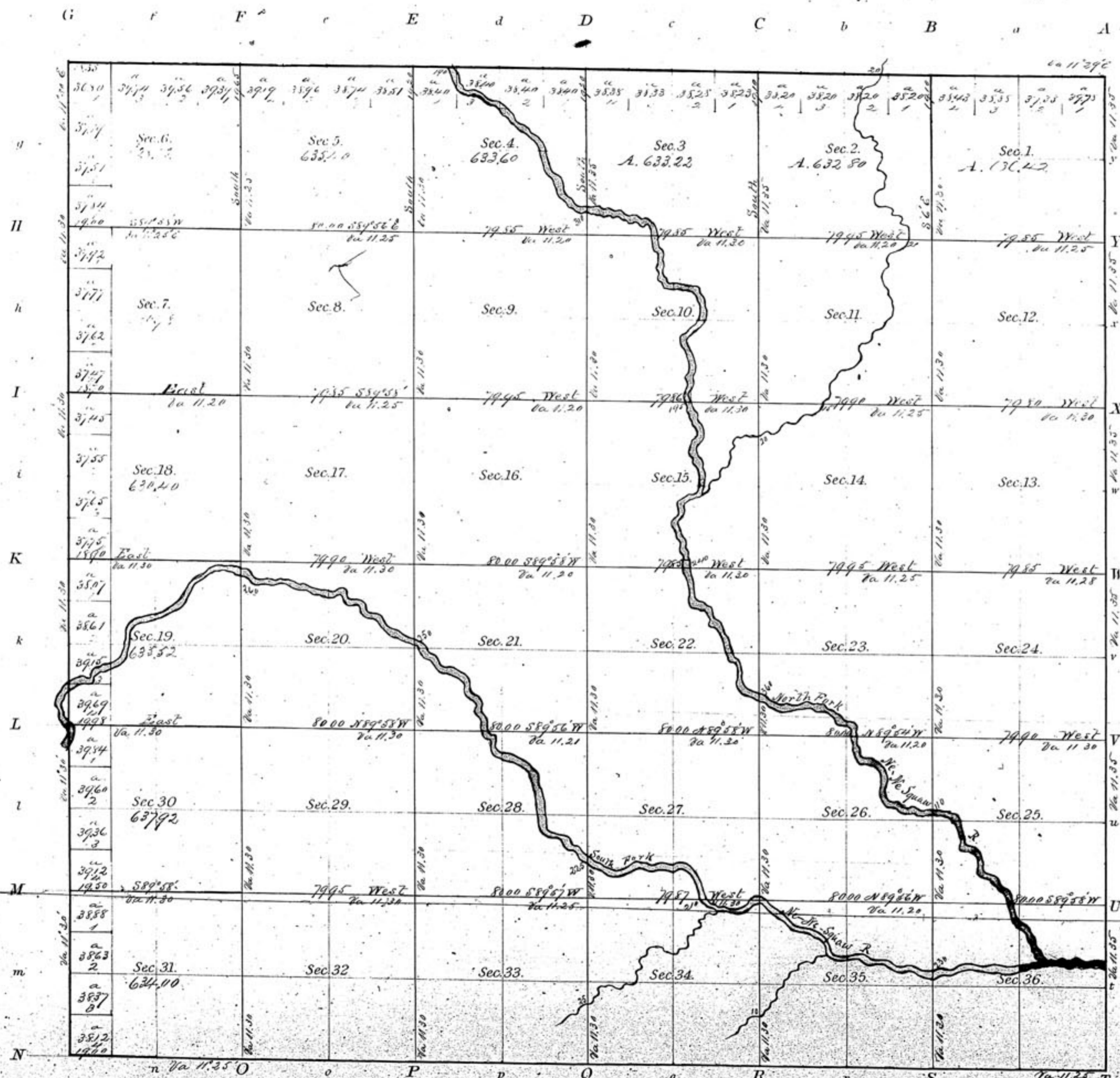


TOWNSHIP N^o 28 South RANGE N^o 4 West 6 Principal MERIDIAN KAN.



Meanders of

Posts	Courses	Ch'rs	Posts	Courses	Ch'rs	Posts	Courses	Ch'rs

Department of the Interior
 General Land Office
 December 1st, 1871

I hereby certify that this is a correct copy of plat of Township No 28 South Range No 4 West 6th Principal Meridian in the State of Kansas on file in this office.

William Mullica
 Commissioner

Total number of Acres. 32,968.06

Survey Designated	By Whom Surveyed	Date of Contract	Amount of Survey	When Surveyed
Township lines	Saml S. Smeat	May 28, 1867	39,70.46	Oct 16 th 1867
Subdivisions				

The above Map of Township No 28 South of Range No 4 West 6th Principal Meridian State of Kansas is strictly conformable to the field notes of the survey thereof on file in this Office, which have been examined and approved.

General Land Office
 Surveyors Office
 April 16th 1868 }
 Jos. S. Wilson
 Commissioner