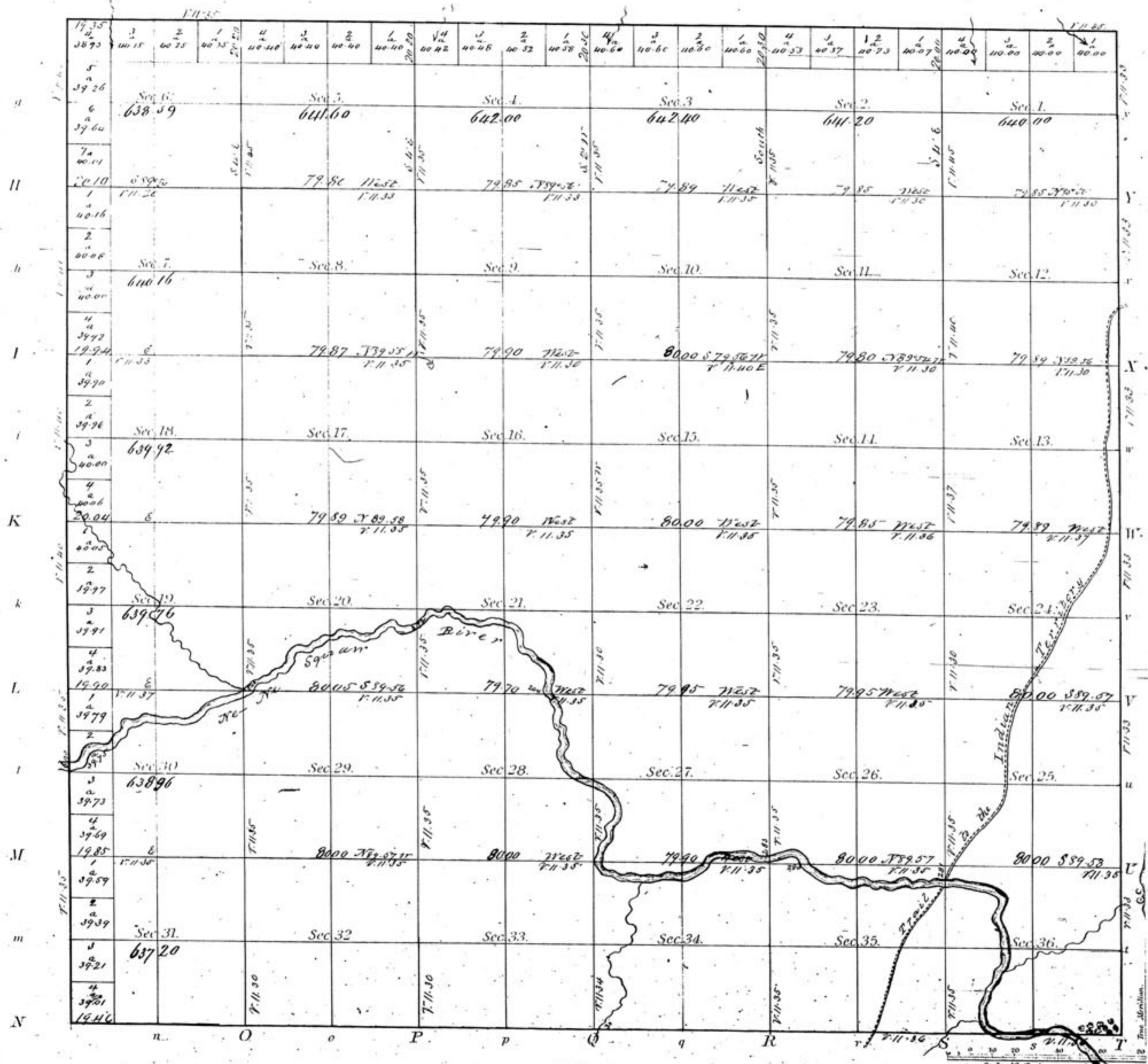


TOWNSHIP N^o 29 South RANGE N^o 2 West of the 6th Principal

MERIDIAN

G F E D C B A



Meanders of
Bore Course 48° 12' Posts Courses Ch. Lk. Posts Courses Ch. Lk.

Department of the Interior
General Land Office
Washington, 15, 1872
I hereby certify that this is a correct copy
of the plat of Township No. 29 South, Range
No. 2 West of the 6th Principal Meridian
in the State of Kansas as filed in this office
Edwin Drummond
Commissioner

Total number of Acres. 23,044.79

Survey Designated	By Whom Surveyed	Date of Contract	Amount of Survey	When Surveyed
Township lines	Paul J. Smeat	May 25th 1867	M. Ch. Lk.	
Subdivisions	" "	" "	59.78.61	Oct 21 st to 27 th 1867

The above Map of Township No. 29 South of Range No. 2 West 6th Principal Meridian State of Kansas is strictly conformable to the field notes of the survey, filed on file in this office, which have been examined and approved.
General Land Office
April 16th 1868
Edw. J. Nelson
Commissioner