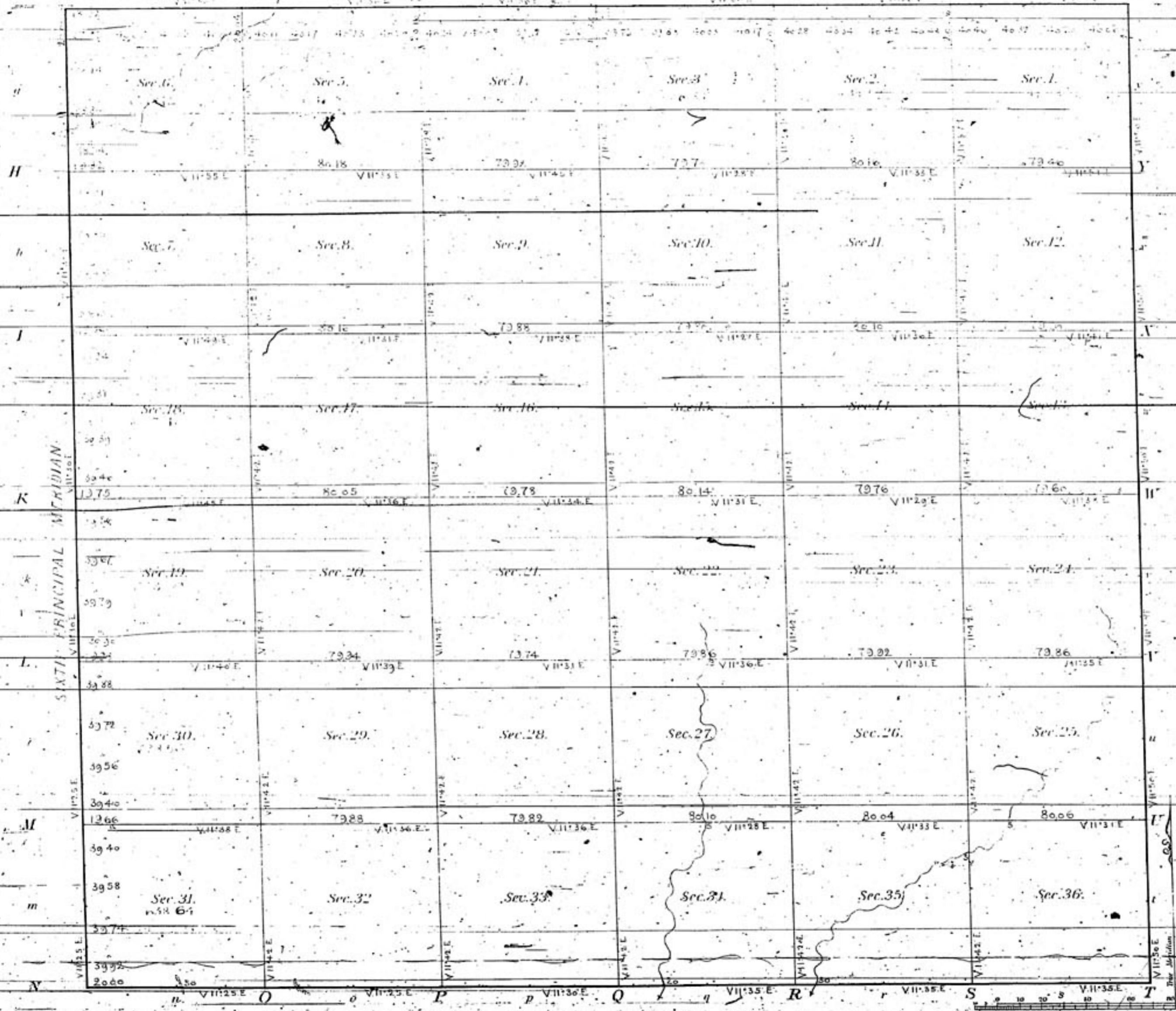


TOWNSHIP N^o 25 SOUTH RANGE N^o 1 EAST OF THE 6th PRINCIPAL MERIDIAN

KANTER.

G F E D C B A



Meanders of
Bats Courses 167 1/2 Posts Courses 167 1/2 Posts Courses 167 1/2

FIFTH STANDARD PARALLEL SOUTH
Total number of Acres 23,025.52

Survey Designated	By Whom Surveyed	Date of Contract	Amount of Surveys	When Surveyed
Township lines	Samuel Hawthorne	July 2 nd 1858	36 100 - 121	September 1858
Subdivisions	Quindor & Thompson	July 2 nd 1858	59 76 - 48	August 16 th 1859
5 th Standard Parallel S	Joseph Ledlie	Feb 27 th 1855		September 1856
6 th Prin. Meridian S	Joseph Ledlie	March 28 th 1856		August 1856

The above Map of Township N^o 25 South of Range N^o 1 East of the 6th Principal Meridian Kansas Territory is strictly conformable to the field notes of the survey thereof on file in this Office which have been examined and approved
 Surveyor General's Office.
 Nebraska City N. B. Aug. 14th 1860
 Wm. B. Burdett
 Surveyor Genl.