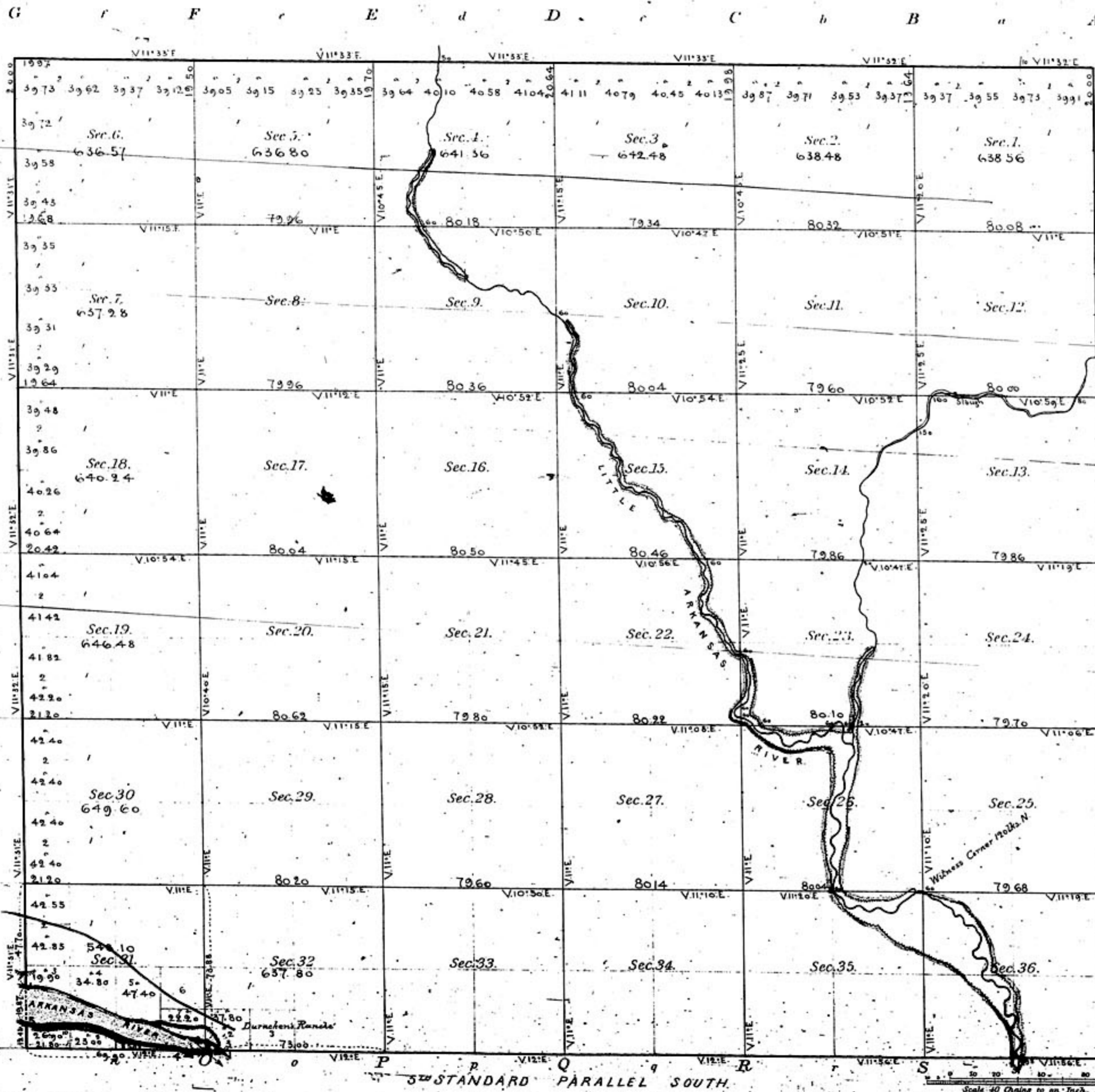
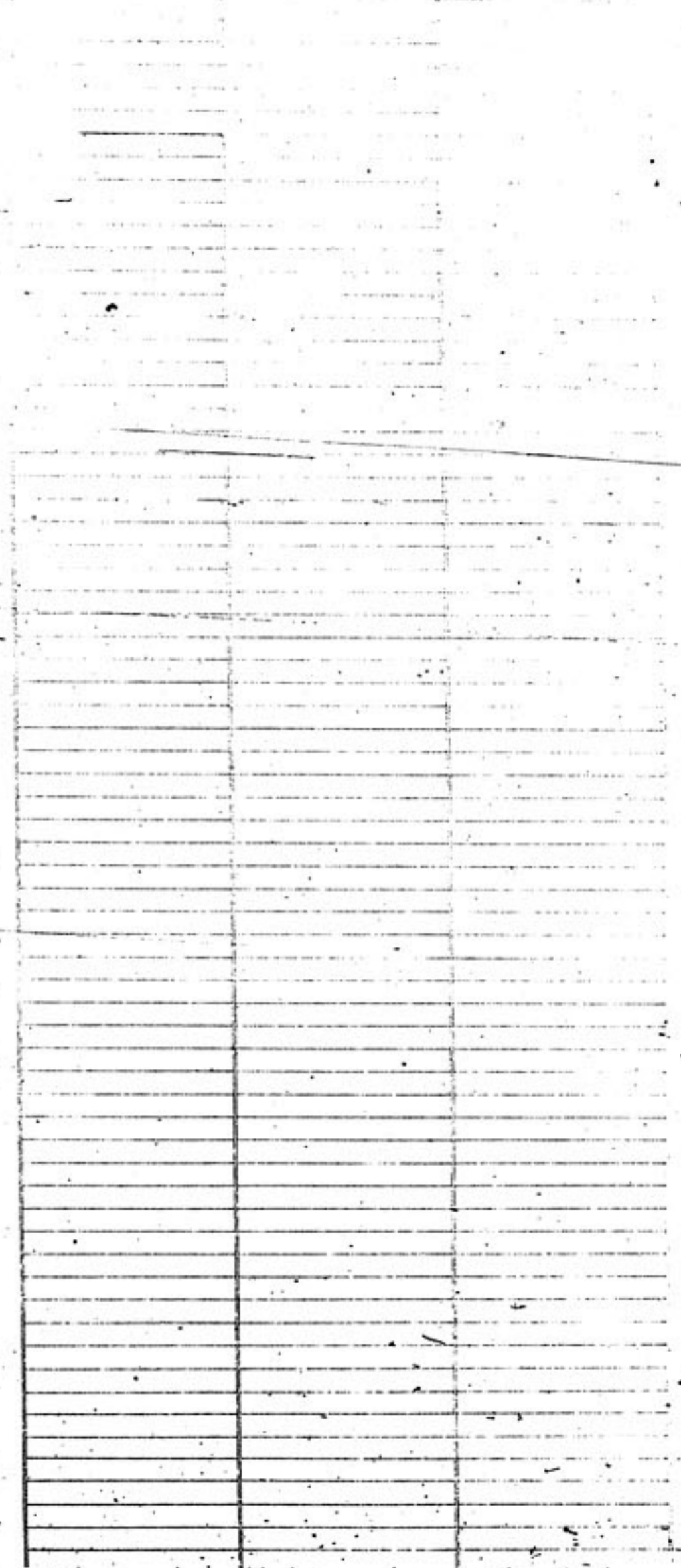


TOWNSHIP N<sup>o</sup> 25 SOUTH RANGE N<sup>o</sup> 1 WEST OF THE 6<sup>th</sup> PRINCIPAL MERIDIAN

KAN. TER.



Meanders of  
 Posts Courses CH<sup>o</sup>IK<sup>o</sup> Posts Courses CH<sup>o</sup>IK<sup>o</sup> Data Courses CH<sup>o</sup>IK<sup>o</sup>



Surveys Designated	By Whom Surveyed	Date of Contract	Amount of Surveys	When Surveyed
Township lines	James Withrow	August 6 <sup>th</sup> 1860	M. Ch. IK <sup>o</sup>	September 1860
Subdivisions	Huck & Smith	Sept 21 <sup>st</sup> 1860	60 02 26	Oct 2 <sup>nd</sup> 11 <sup>th</sup> 1860
5 <sup>th</sup> Standard Parallel	Fredrick Kawn	July 2 <sup>nd</sup> 1858		October 1858
6 <sup>th</sup> Prin Meridian	Joseph Sedlie	March 28 <sup>th</sup> 1856		August 1856
	Meanders		2 07 80	
	Total		62 10 06	

Total number of Acres. 22,953.75  
 Estimated Area of River 106 acres.

The above Map of Township N<sup>o</sup> 25 South of Range N<sup>o</sup> 1 West of the 6<sup>th</sup> Principal Meridian Kansas Territory is strictly conformable to the field notes of the survey thereof on file in this Office, which have been examined and approved.  
 Surveyor General's Office.  
 Wm. D. B. Burnett  
 11<sup>th</sup> Sur. Genl.