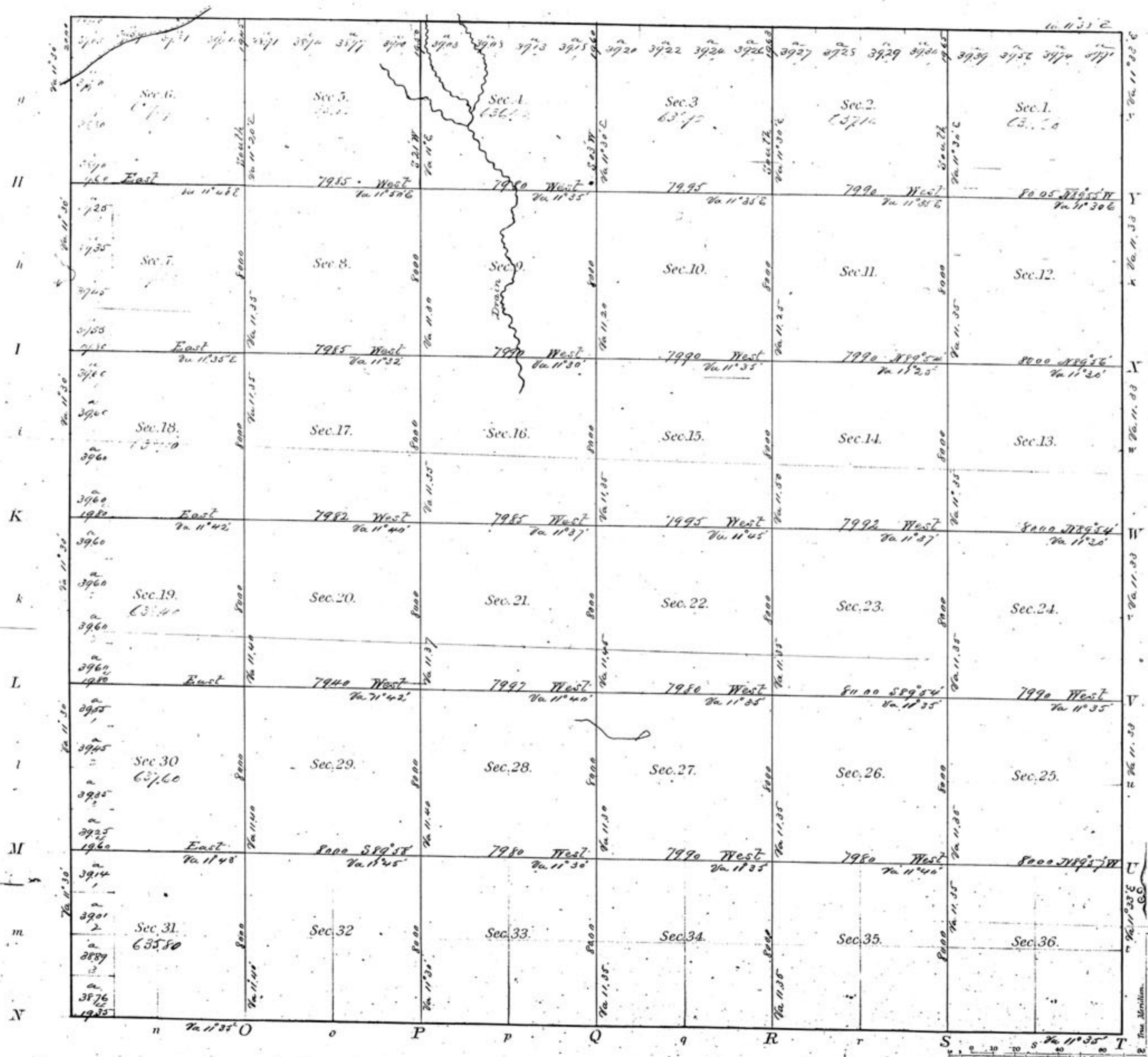


TOWNSHIP N^o 28 SOUTH RANGE N^o 2 WEST 6th PRINCIPAL MERIDIAN KAN.

G F E D C B A



Meanders of

Posts	Courses	Ch. ^o & D ^o	Posts	Courses	Ch. ^o & D ^o	Posts	Courses	Ch. ^o & D ^o

Department of the Interior
General Land Office
December 1st 1877

I hereby certify that this is a correct copy of the Plat of Township N. 28 South, Range N. 2 West of the 6th Principal Meridian, State of Kansas on file in this Office.

Walter D. Hammond
Commissioner

Total number of Acres. 23002.59

Surveys Designated	By Whom Surveyed	Date of Contract	Amount of Survey	When Surveyed
Township lines	Saml S. Smart	May 28 th 1867	M. C. D.	
Subdivisions	"	"	59-73-64	Nov 12 th 1867

The above Map of Township N. 28 South of Range N. 2 West 6th Principal Meridian State of Kansas is strictly conformable to the field notes of the survey thereof on file in this Office, which have been examined and approved.

General Land Office
Department of the Interior
April 16th 1868

Joe S. Wilson